



Vaughan

Vaughan E Series 50 Hz Chopper Pump PERFORMANCE CURVE

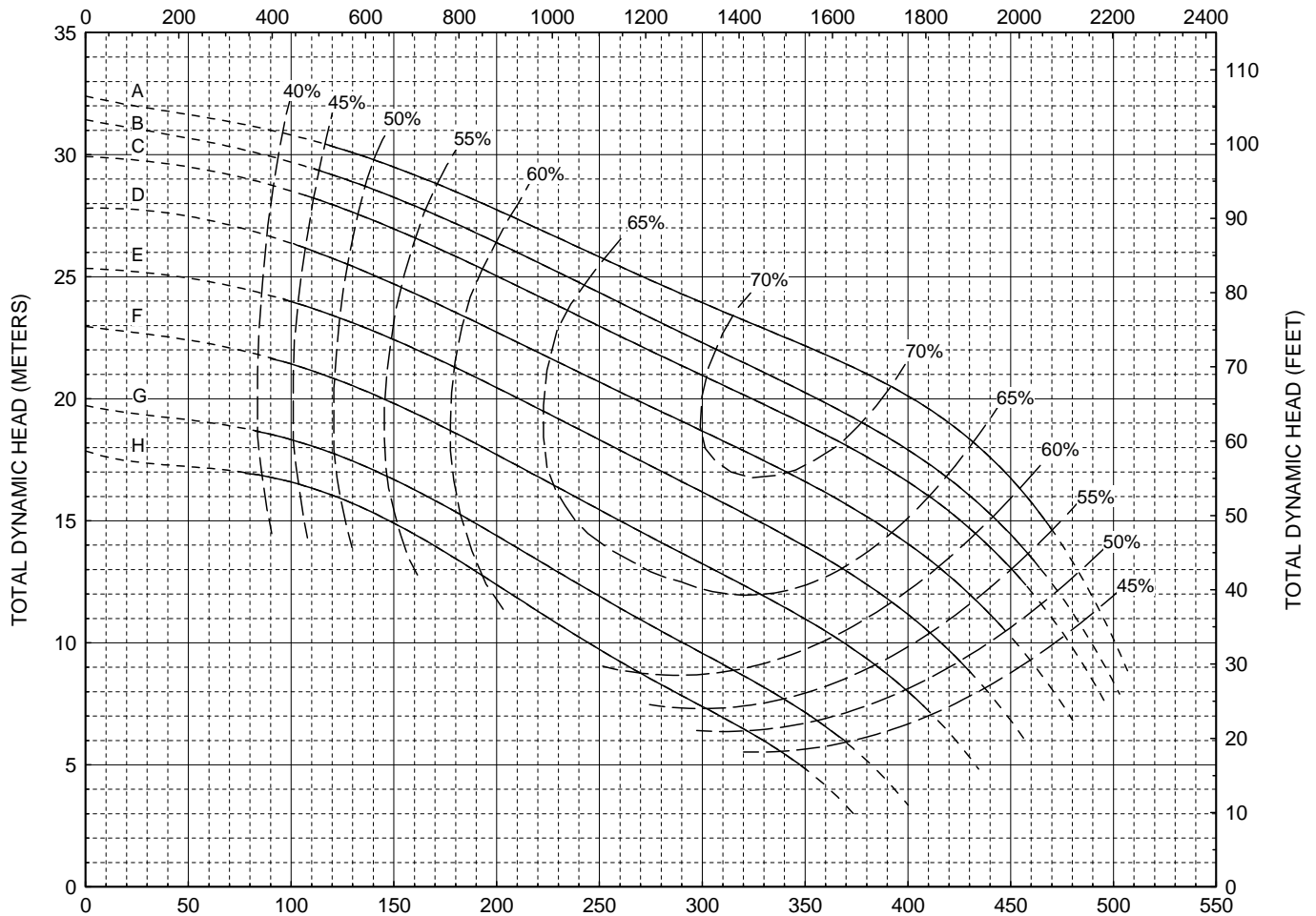
**Models:
V6X
V6XR**

**6 Blade Impeller
6" Discharge
Tangential Casing**

| CURVE | POWER (HP/KW) | SPEED (RPM) | IMPELLER DIAMETER |
|-------|---------------|-------------|-------------------|
| A | 50 / 37 | 1460 | 11.80" (300 mm) |
| B | 50 / 37 | 1460 | 11.50" (292 mm) |
| C | 40 / 30 | 1460 | 11.30" (287 mm) |
| D | 40 / 30 | 1460 | 10.90" (277 mm) |
| E | 30 / 22 | 1460 | 10.50" (267 mm) |
| F | 25 / 18.5 | 1460 | 10.00" (254 mm) |
| G | 20 / 15 | 1460 | 9.50" (241 mm) |
| H | 15 / 11 | 1460 | 9.00" (229 mm) |

DO NOT OPERATE PUMP IN DOTTED PORTION OF CURVES. CURVES SUBJECT TO CHANGE WITHOUT NOTICE. EFFICIENCIES SHOWN ARE NOMINAL. GUARANTEED MINIMUM EFFICIENCIES PER H.I. LEVEL B.

CAPACITY (U.S. GALLONS PER MINUTE)



CAPACITY (CUBIC METERS PER HOUR)

Form V242XE-V6X-1460 6/11