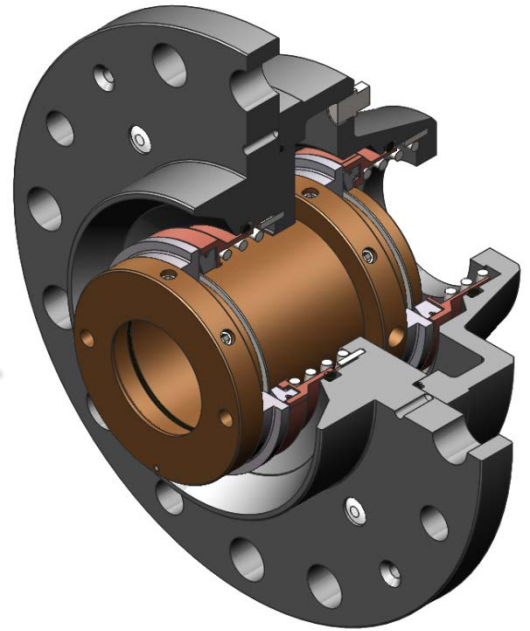




# Vaughan Tandem Mechanical Cartridge Seal

## Features:

- Ruggedly designed for Vaughan Chopper pumps.
- Simple cartridge seal installation. As easy to install as the time-proven single Vaughan Cartridge Seal.
- Choice of face materials & elastomers allows seal to be tailored to application.
- Available for all sizes of Vaughan horizontal and pedestal dry pit pumps.

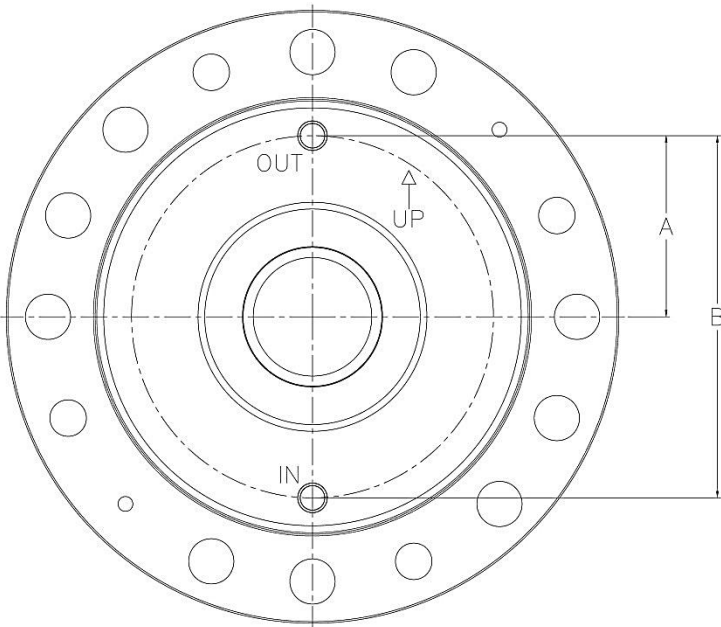


## Flush Configurations:

### Quench & Drain

- Use a low cost flow regulator to control flow at 3 gallons per hour
- Upgrade to available thermal valve for lower water usage.
- Add available temperature switch to guard against loss of supply water for flush system

Other flushing configurations are available upon request



## Dimensions:

Model	A	B	Thread
3-6" Pumps	2"	4"	1/4" NPT
8-16" Pumps	3.25"	6.5"	1/4" NPT

## Materials of Construction:

- Sleeve**.....Heat treated stainless steel
- Housing**.....Stainless steel or ductile iron
- Springs**.....Stainless steel
- Faces**.....Silicone carbide or tungsten carbide
- Elastomers**...Viton – others available



### Vaughan Co., Inc.

364 Monte Elma Road  
Montesano, WA 98563

Phone: 360-249-4042, FAX: 360-249-6155

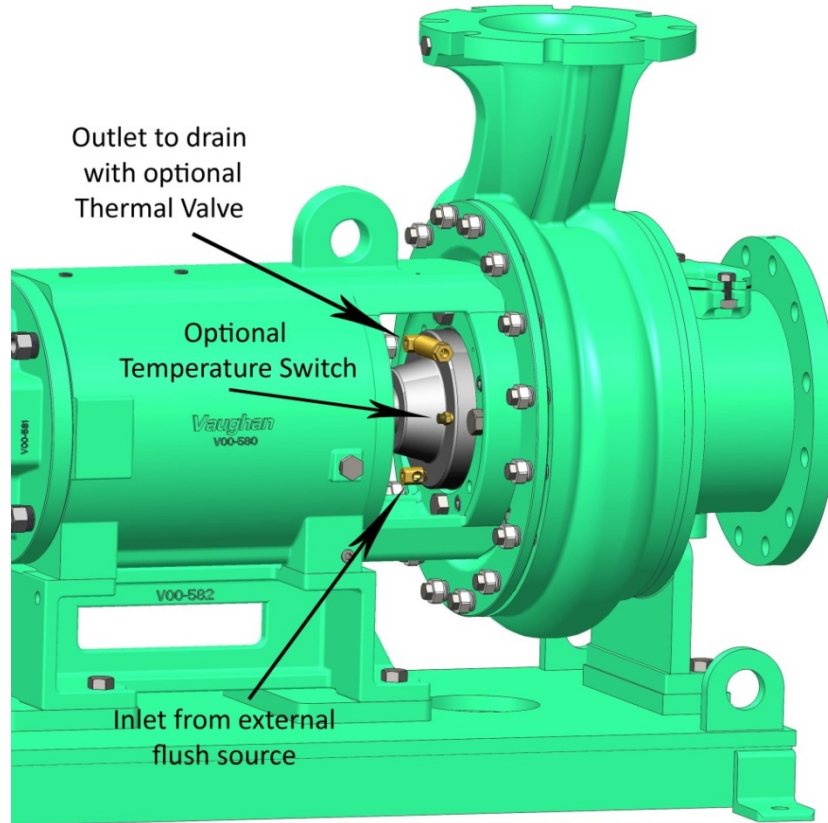
e-mail: info@chopperpumps.com

CURRENT U.S. PATENTS: Nos. 7,125,221, 5,460,482;  
5,460,483; 5,456,580; 5,256,032; 5,076,757;  
4,840,384; 4,842,479.

CURRENT FOREIGN PATENTS: Nos. 2 371 834; 2 188  
138; 1,290,981; 276224; 0 774 045.  
OTHER PATENTS PENDING.

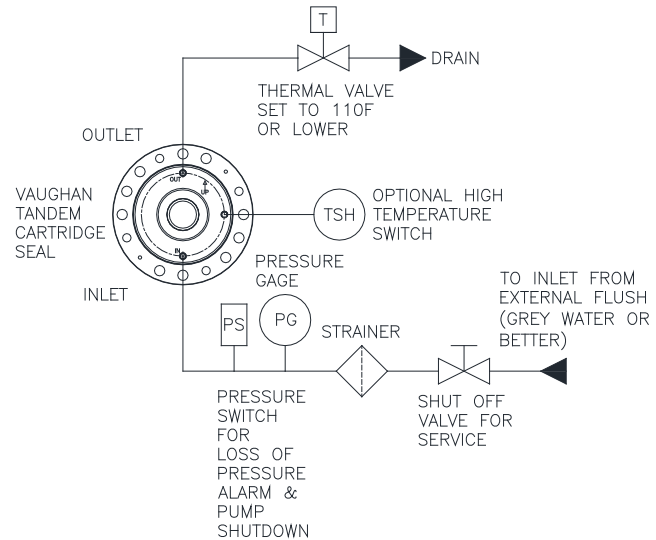
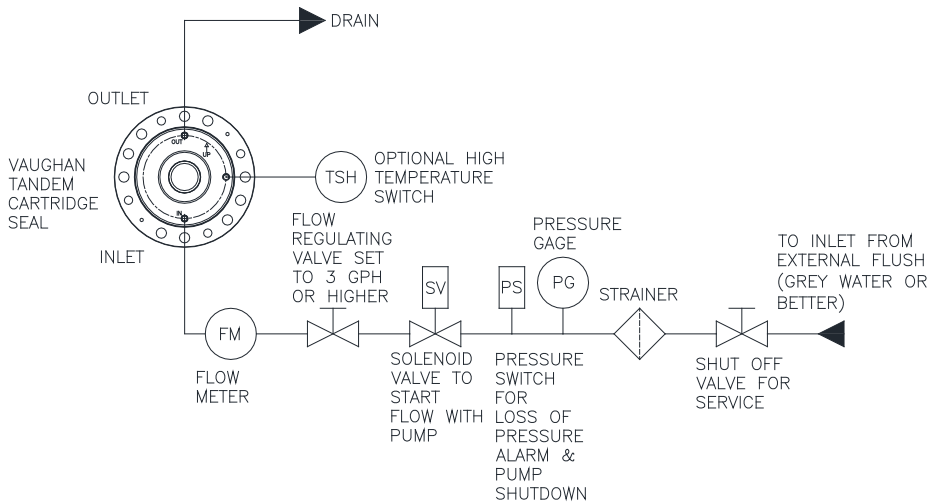


# Vaughan Tandem Mechanical Cartridge Seal



RECOMMENDED:  
QUENCH & DRAIN

OPTIONAL:  
QUENCH & DRAIN  
WITH THERMAL VALVE



## Vaughan Co., Inc.

364 Monte Elma Road  
Montesano, WA 98563

Phone: 360-249-4042, FAX: 360-249-6155  
e-mail: info@chopperpumps.com

CURRENT U.S. PATENTS: Nos. 7,125,221, 5,460,482;  
5,460,483; 5,456,580; 5,256,032; 5,076,757;  
4,840,384; 4,842,479.

CURRENT FOREIGN PATENTS: Nos. 2 371 834; 2 188  
138; 1,290,981; 276224; 0 774 045.  
OTHER PATENTS PENDING.