



# Vaughan E Series Vertical Chopper Pump PERFORMANCE CURVE

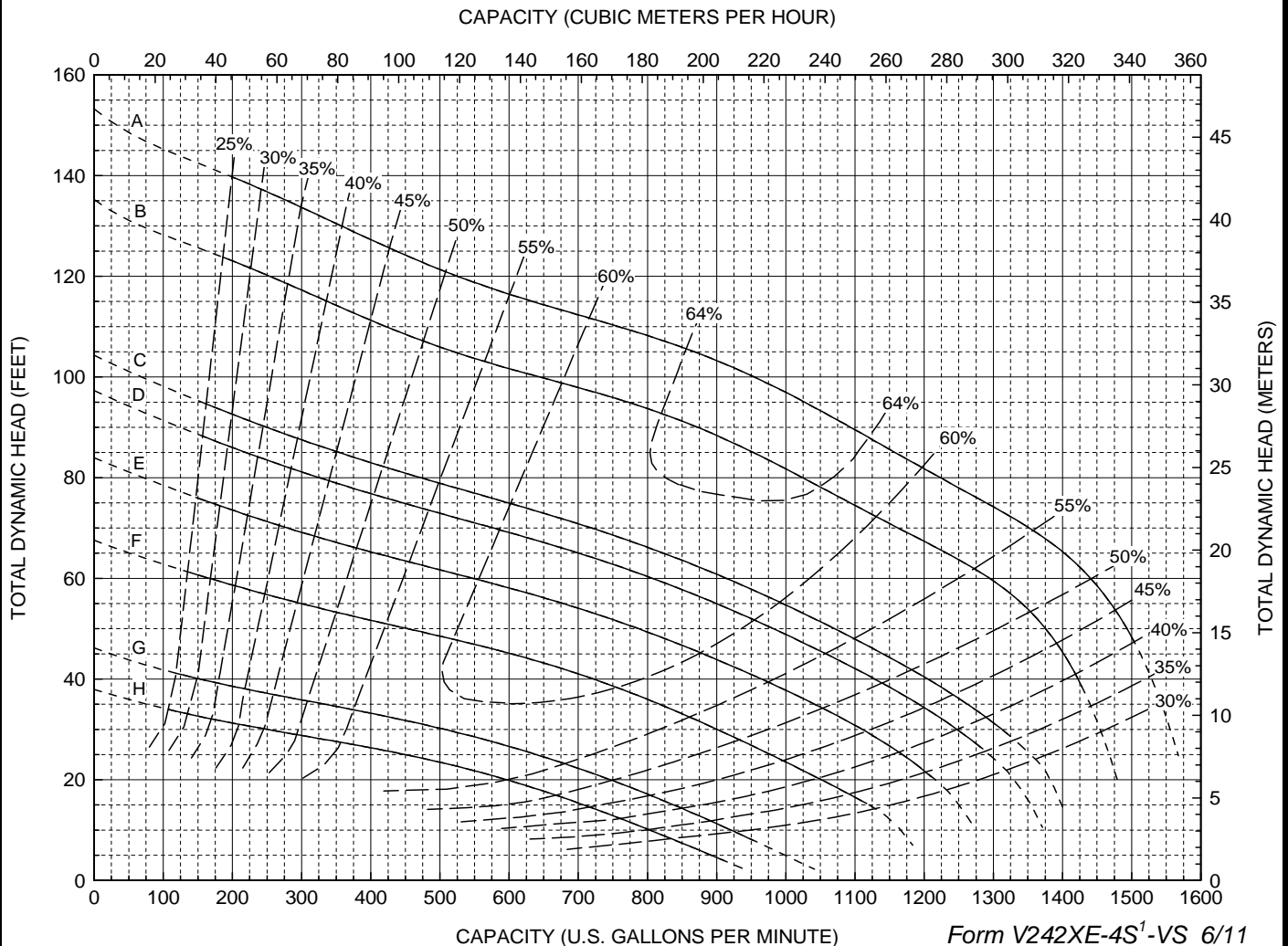
## Models:

**C4S\***  
**S4S**  
**V4S**  
**V4SR**

**3-Blade Impeller**  
**4" Discharge**  
**Variable Speed Curve**

CURVE	POWER (HP/KW)	SPEED (RPM)	IMPELLER DIAMETER
A	50 / 37	1775	11.8" (300mm)
B	40 / 30	1670	11.8" (300mm)
C	30 / 22	1460	11.8" (300mm)
D	25 / 19	1410	11.8" (300mm)
E	20 / 15	1310	11.8" (300mm)
F	15 / 11	1180	11.8" (300mm)
G	10 / 7.5	970	11.8" (300mm)
H	7.5 / 5.5	880	11.8" (300mm)

DO NOT OPERATE PUMP IN DOTTED PORTION OF CURVES. CURVES SUBJECT TO CHANGE WITHOUT NOTICE. EFFICIENCIES SHOWN ARE NOMINAL BOWL. GUARANTEED MINIMUM EFFICIENCIES PER H.I. LEVEL B. \*C4P CONFIGURATION REQUIRES ADDITIONAL 5 HP. CONSULT VAUGHAN FOR MAX. LENGTH AND RPM.



CAPACITY (U.S. GALLONS PER MINUTE)

Form V242XE-4S<sup>1</sup>-VS 6/11