



# Vaughan

## Vaughan E Series Vertical Chopper Pump PERFORMANCE CURVE

### Models:

**C6U** (max 4' long)

**V6U**

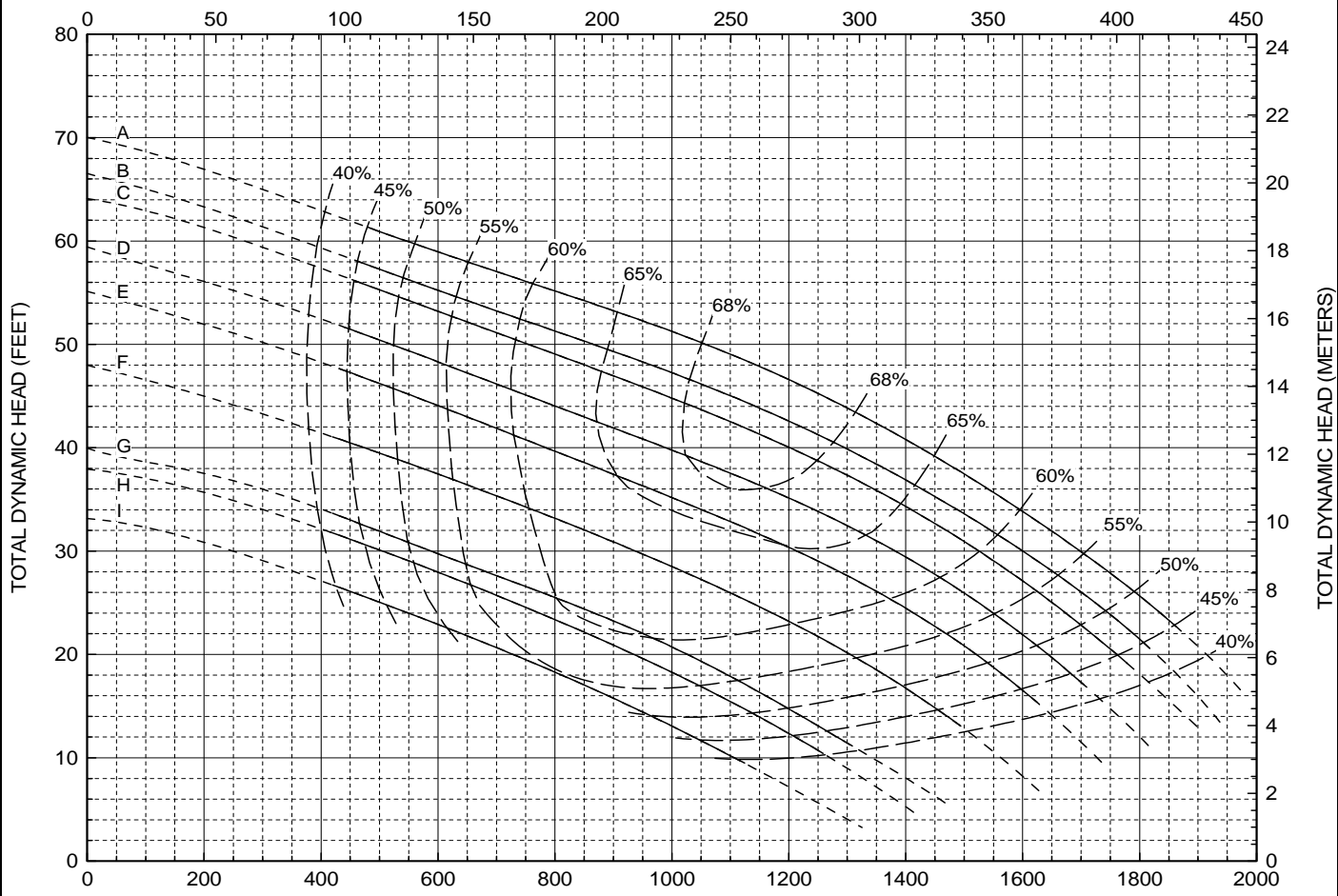
**V6UR**

**4 Blade Impeller  
6" Discharge  
Tangential Casing**

CURVE	POWER (HP)	SPEED (RPM)	IMPELLER DIAMETER
A	25	1180	11.80" (300 mm)
B	25	1180	11.50" (292 mm)
C	25*	1180	11.30" (287 mm)
D	20	1180	10.90" (277 mm)
E	20**	1180	10.50" (267 mm)
F	15	1180	10.00" (254 mm)
G	10	1170	9.40" (239 mm)
H	10	1170	9.20" (234 mm)
I	7.5	1175	8.80" (224 mm)

DO NOT OPERATE PUMP IN DOTTED PORTION OF CURVES. CURVES SUBJECT TO CHANGE WITHOUT NOTICE. EFFICIENCIES SHOWN ARE NOMINAL. GUARANTIED MINIMUM EFFICIENCIES PER H.I. LEVEL B. ADD 5 HP FOR CANTILEVER MODELS. \*EXCEEDS 20 HP BEYOND 1730 GPM. \*\*EXCEEDS 15 HP BEYOND 1550 GPM.

CAPACITY (CUBIC METERS PER HOUR)



CAPACITY (U.S. GALLONS PER MINUTE)

Form V242XE-V6V-1170 3/10