



# Vaughan

## Vaughan E Series Vertical Chopper Pump PERFORMANCE CURVE

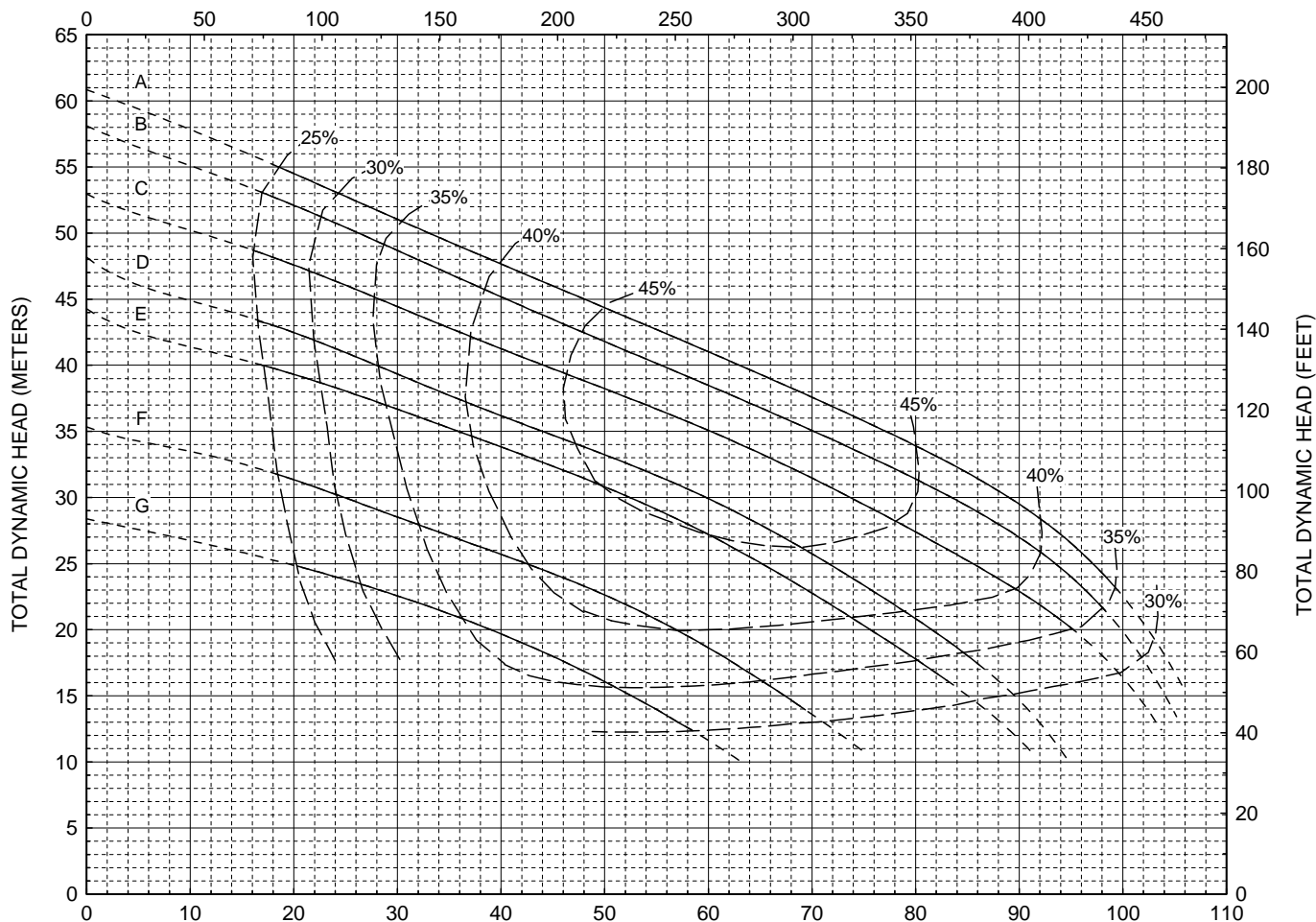
**Models:**  
**V3V**  
**V3VR**

**3 Blade Impeller**  
**3" Discharge**  
**Tangential Casing**

CURVE	POWER (KW/HP)	SPEED (RPM)	IMPELLER DIAMETER
A	22 / 30	2900	8.00" (203 mm)
B	18.5 / 25	2900	7.80" (198 mm)
C	18.5 / 25	2900	7.50" (190 mm)
D	15 / 20	2900	7.30" (185 mm)
E	15 / 20	2900	7.00" (178 mm)
F	11 / 15	2900	6.50" (165 mm)
G	7.5 / 10	2900	6.00" (152 mm)

DO NOT OPERATE PUMP IN DOTTED PORTION OF CURVES. CURVES SUBJECT TO CHANGE WITHOUT NOTICE. EFFICIENCIES SHOWN ARE NOMINAL. GUARANTIED MINIMUM EFFICIENCIES PER H.I. LEVEL B.

CAPACITY (U.S. GALLONS PER MINUTE)



CAPACITY (CUBIC METERS PER HOUR)

Form V242-XE-V3V<sup>2</sup>-2900 5/11